

ISOMETRIC VIEW

REAR VIEW

TABLE-1

SKU NUMBER	WEIGHT IN kg [lb]	Center of Gravity in mm [Inches]		
		X-diection	Y-direction	Z-direction
GVXLOPT001	271 [597.5]	279 [10.98]	941.5 [37.06]	564.5 [22.23]

- NOTES:
1. INSTALLATION SHALL COMPLY WITH ALL APPLICABLE NATIONAL, STATE AND LOCAL REGULATIONS.
  2. REFER TO PRODUCT DOCUMENTATION FOR ADDITIONAL DETAILS PRIOR TO INSTALLATION AND SITE PREPARATION WORK.
  3. ALL DIMENSIONS ARE IN MILLIMETERS [INCHES].
  4. CLEARANCE DIMENSIONS ARE MEANT FOR AIRFLOW AND SERVICE ACCESS ONLY. CONSULT WITH THE LOCAL SAFETY CODES AND STANDARDS FOR ADDITIONAL REQUIREMENTS IN YOUR LOCAL AREA.
  5. CABLE ENTRY IS FROM TOP OF THE UNIT.
  6. REFER TO TABLE-1 FOR APPLICABLE CR/SKU NUMBERS, WEIGHT AND CENTER OF GRAVITY OF THE UNIT. THIS INFORMATION PROVIDES APPROXIMATE CENTER OF GRAVITY CALCULATION.
  7. OPERATING TEMPERATURE: 0°C TO 50°C [32°F TO 122°F].
  8. PROTECTION CLASS IP20.
  9. THE INSTALLATION KIT TME86016 CONTAINS PARTS AND NUMBERED INSTALLATION BAGS WITH HARDWARE THAT WILL BE USED FOR INSTALLATION.

THIS DRAWING AND SPECIFICATIONS HEREIN ARE THE PROPERTY OF SCHNEIDER ELECTRIC AND SHALL NOT BE COPIED, REPRODUCED OR USED IN WHOLE OR IN PART, AS THE BASIS FOR THE MANUFACTURE OR SALE OF ITEMS WITHOUT WRITTEN PERMISSION FROM SCHNEIDER ELECTRIC. THIS DRAWING IS BASED UPON LATEST AVAILABLE INFORMATION AND IS SUBJECT TO CHANGE WITHOUT NOTICE.



TITLE: Galaxy VXL Backfeed Protection Cabinet 380/400/415V, 3PH, 50/60Hz, Single/Dual Mains GENERAL ARRANGEMENT

PROJECT: SUBMITTAL DRAWINGS SHEET 1 OF 4

DWG NO: GVXLOPT001

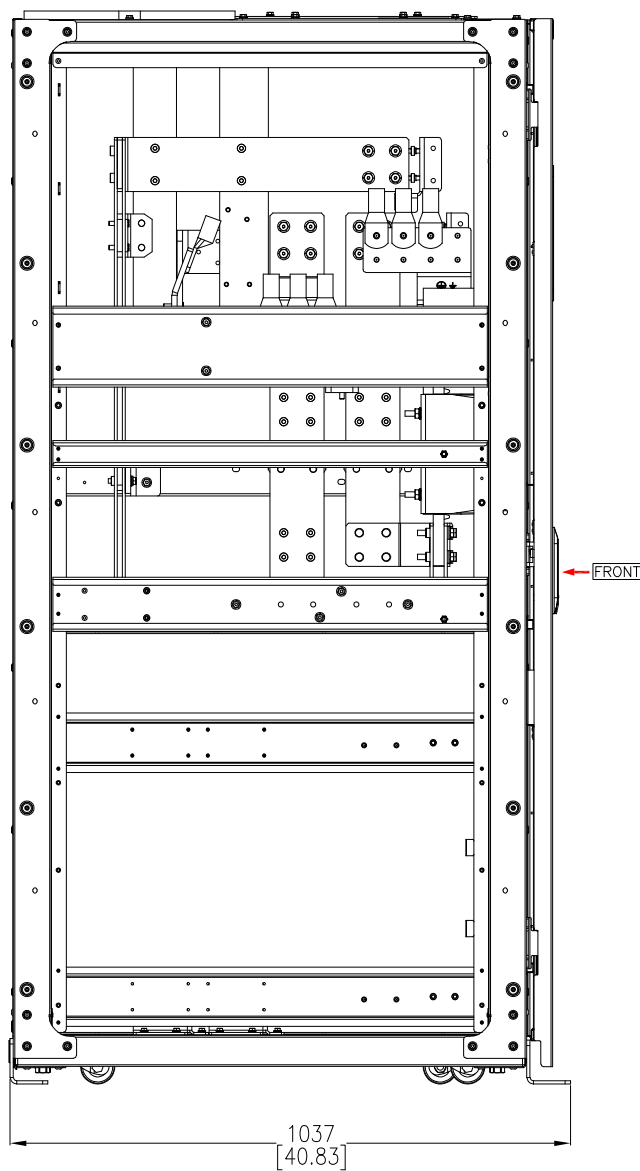
DRAWN: TRASSIA 03-DEC-25

ENGINEER: ChenLei BAO 17-DEC-25

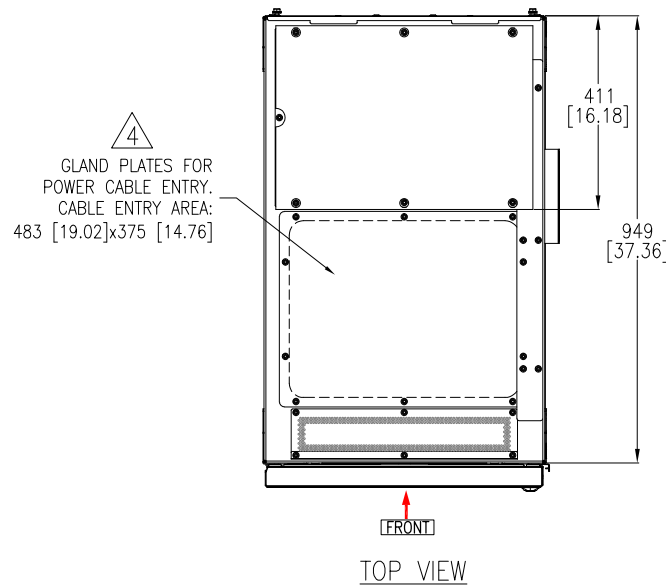
APPROVED: Jerry LIU 17-DEC-25

REV: 0

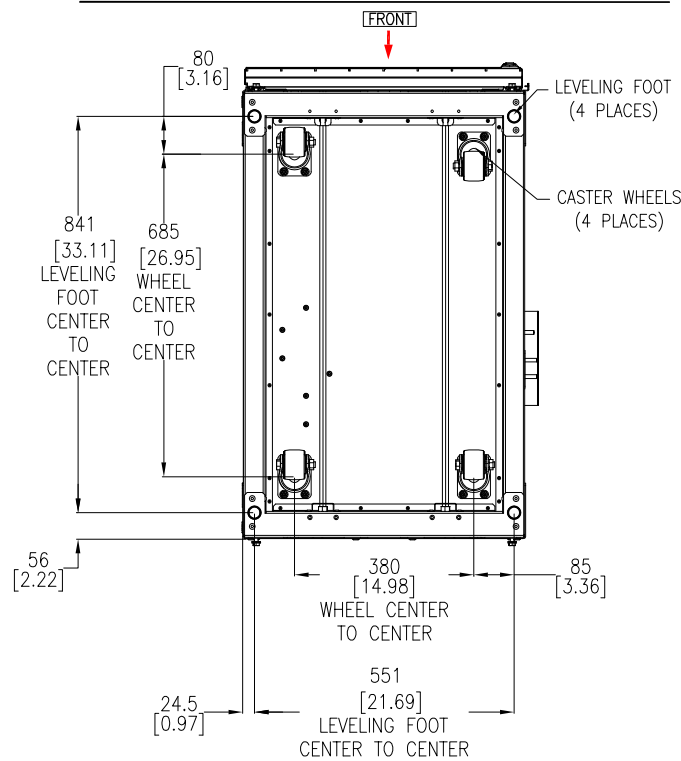
FIRST ANGLE PROJECTION



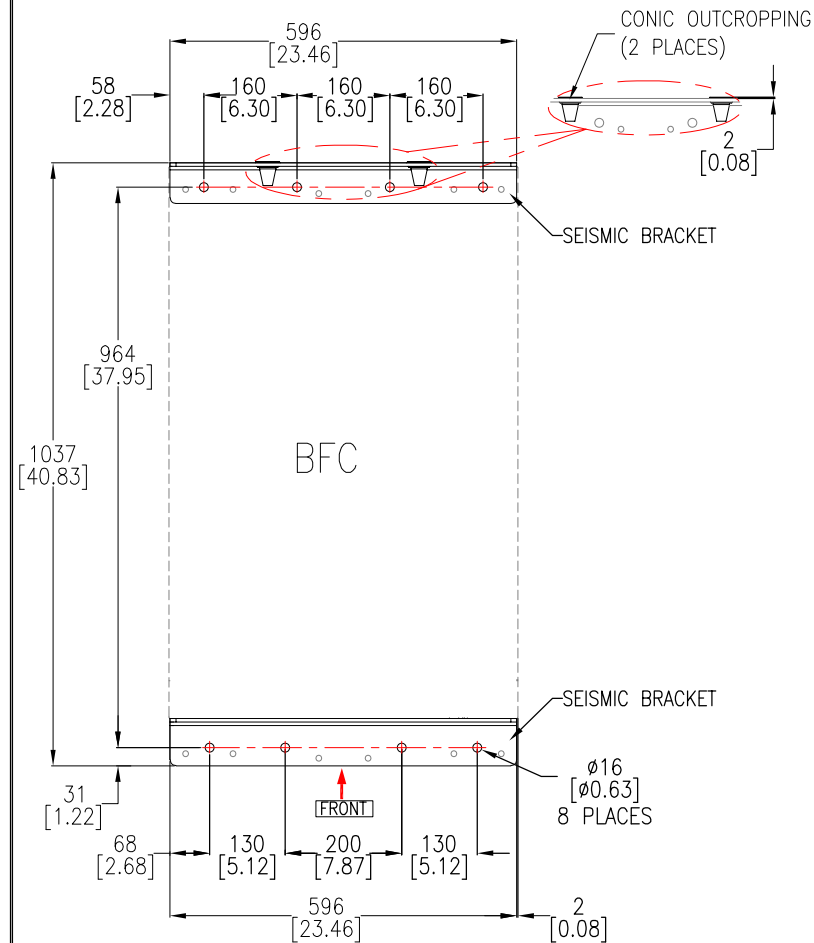
LEFT SIDE VIEW WITH ANCHORING BRACKETS  
(WITHOUT SIDE DOOR)



TOP VIEW



BOTTOM VIEW



SEISMIC ANCHORING DETAILS—  
LOOKING FROM TOP

#### NOTES:

1. INSTALLATION SHALL COMPLY WITH ALL APPLICABLE NATIONAL, STATE AND LOCAL ELECTRICAL REGULATIONS.
2. REFER TO PRODUCT DOCUMENTATION FOR ADDITIONAL DETAILS PRIOR TO INSTALLATION AND SITE PREPARATION WORK.
3. ALL DIMENSIONS ARE IN MILLIMETERS [INCHES].
4. DRILL/PUNCH HOLES FOR POWER CABLES OR GROMMETS/CONDUITS IN GLAND PLATE AS PER REQUIREMENT. GROMMETS/CONDUITS ARE NOT PROVIDED, REMOVE PLATE FROM CABINET BEFORE DRILLING/PUNCHING.
5. USE THE PALLET BRACKETS FOR SEISMIC ANCHORING. FOLLOW THE STEPS MENTIONED IN INSTALLATION MANUAL. M12 HARDWARE OF STRENGTH GRADE 8.8 MINIMUM (NOT PROVIDED) ARE TO BE USED TO MOUNT THE BRACKETS. PUSH THE UPS TO FINAL LOCATION WHERE REAR BRACKET IS ANCHORED TO THE FLOOR.

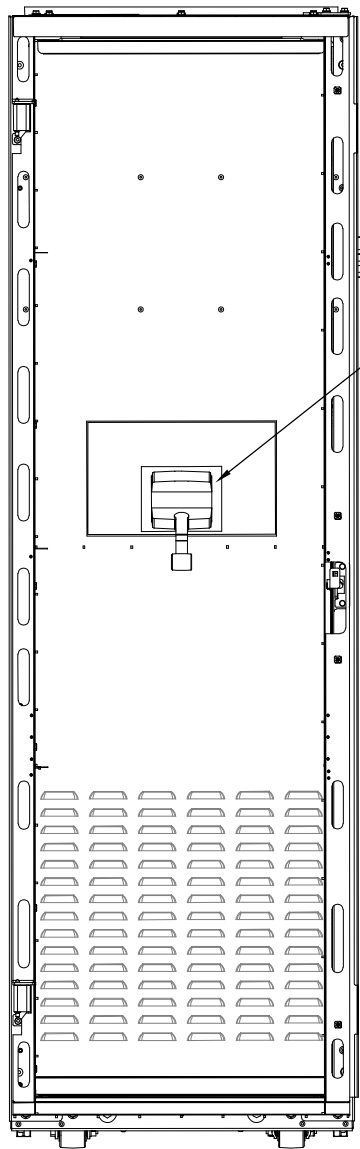
THIS DRAWING AND SPECIFICATIONS HEREIN ARE THE PROPERTY OF SCHNEIDER ELECTRIC AND SHALL NOT BE COPIED, REPRODUCED OR USED IN WHOLE OR IN PART, AS THE BASIS FOR THE MANUFACTURE OR SALE OF ITEMS WITHOUT WRITTEN PERMISSION FROM SCHNEIDER ELECTRIC. THIS DRAWING IS BASED UPON LATEST AVAILABLE INFORMATION AND IS SUBJECT TO CHANGE WITHOUT NOTICE.

**Schneider**  
**Electric**

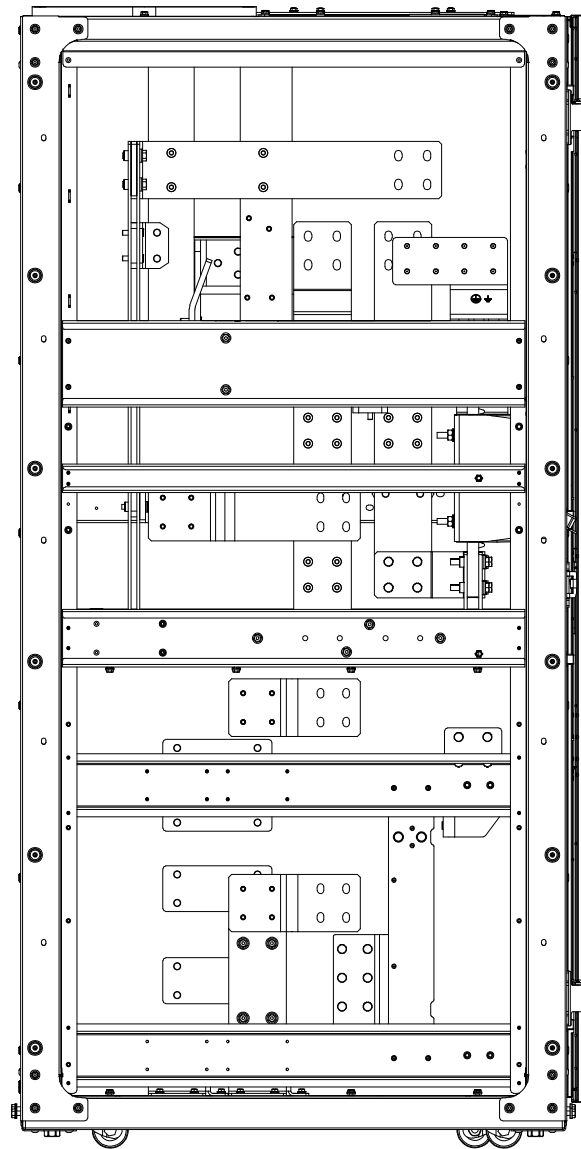
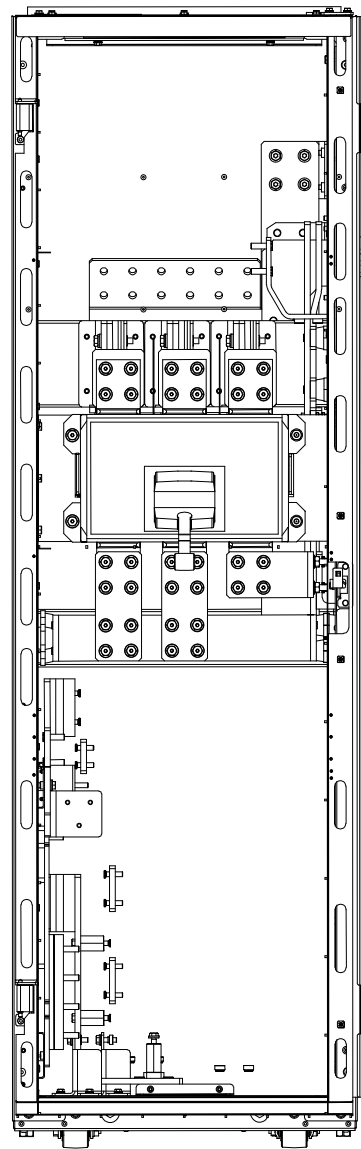
TITLE: Galaxy VXL  
Backfeed Protection Cabinet  
380/400/415V, 3PH, 50/60Hz, Single/Dual Mains  
TOP-BOTTOM VIEWS & ANCHORING DETAILS

PROJECT: SUBMITTAL DRAWINGS SHEET 2 OF 4

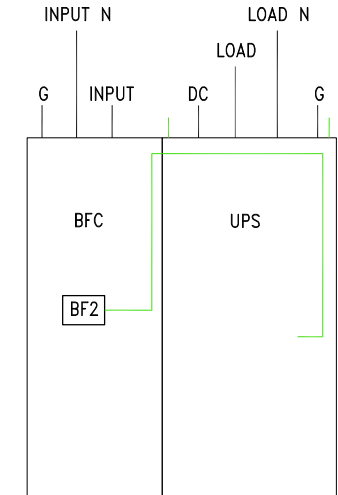
DWG NO:	GVXLOPT001		REV:	0
DRAWN:	TRASSIA	03-DEC-25	FIRST	ANGLE
ENGINEER:	ChenLei BAO	17-DEC-25	ANGLE	PROJECTION
APPROVED:	Jerry LIU	17-DEC-25	ANGLE	PROJECTION



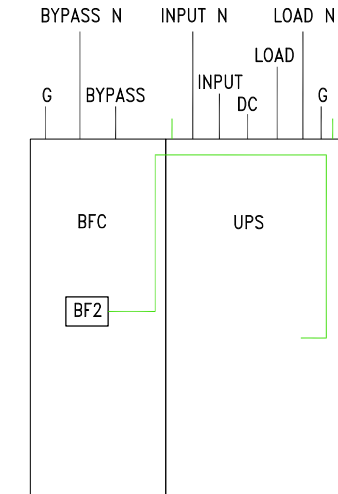
BACKFEED SWITCH,  
3P,  
600VAC,2500A



## TYPICAL INSTALLATION-SINGLE MAINS



## TYPICAL INSTALLATION-DUAL MAINS



— POWER CABLE  
— SIGNAL CABLE

INTERNAL FRONT VIEW  
WITHOUT DOOR & WITH INNER DOOR

INTERNAL FRONT VIEW  
WITHOUT DOORS

INTERNAL LEFT SIDE VIEW  
WITHOUT DOORS & SIDE PANELS

### NOTES:

1. INSTALLATION SHALL COMPLY WITH ALL APPLICABLE NATIONAL, STATE AND LOCAL ELECTRICAL REGULATIONS.
2. REFER TO PRODUCT DOCUMENTATION FOR ADDITIONAL DETAILS PRIOR TO INSTALLATION AND SITE PREPARATION WORK.
3. ALL DIMENSIONS ARE IN MILLIMETERS [INCHES].
4. FOLLOW THE INSTRUCTIONS AS PER INSTALLATION MANUAL FOR INTERCONNECTION BUSBAR ASSEMBLY.

THIS DRAWING AND SPECIFICATIONS HEREIN ARE THE PROPERTY OF SCHNEIDER ELECTRIC AND SHALL NOT BE COPIED, REPRODUCED OR USED IN WHOLE OR IN PART, AS THE BASIS FOR THE MANUFACTURE OR SALE OF ITEMS WITHOUT WRITTEN PERMISSION FROM SCHNEIDER ELECTRIC. THIS DRAWING IS BASED UPON LATEST AVAILABLE INFORMATION AND IS SUBJECT TO CHANGE WITHOUT NOTICE.

**Schneider**  
**Electric**

TITLE: Galaxy VXL  
Backfeed Protection Cabinet  
380/400/415V, 3PH, 50/60Hz, Single/Dual Mains  
INTERNAL VIEWS

PROJECT: SUBMITTAL DRAWINGS SHEET 3 OF 4

DWG NO: GVXLOPT001

DRAWN: TRASSIA 03-DEC-25

ENGINEER: ChenLei BAO 17-DEC-25

APPROVED: Jerry LIU 17-DEC-25

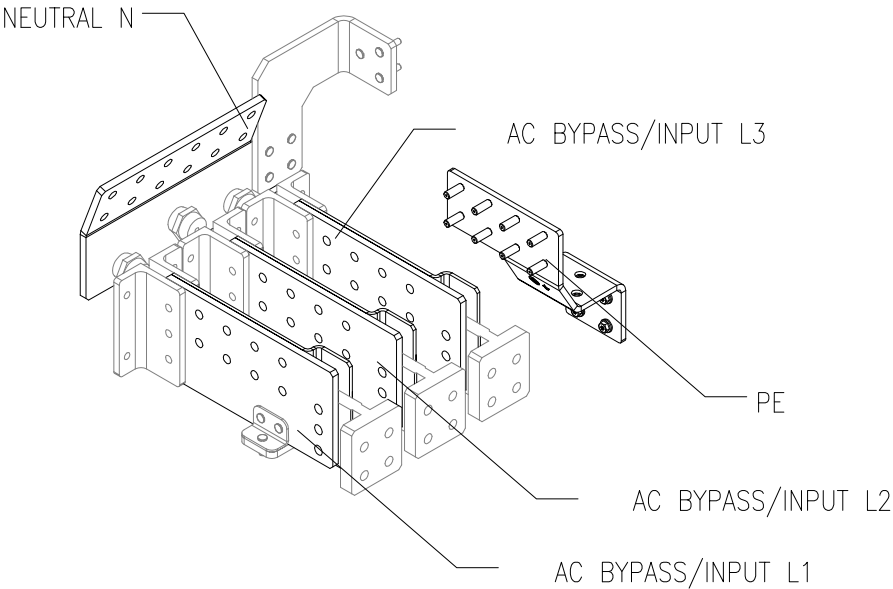
REV: 0

FIRST

ANGLE

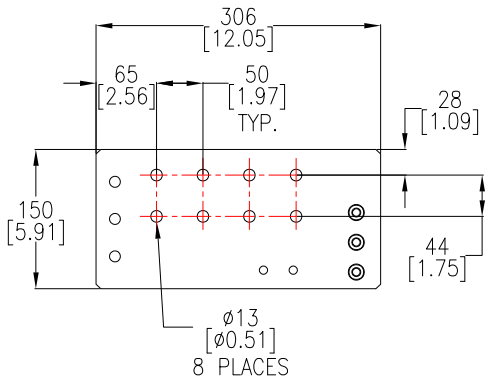
PROJECTION

INPUT/BYPASS CONNECTIONS FOR  
SINGLE/DUAL MAINS

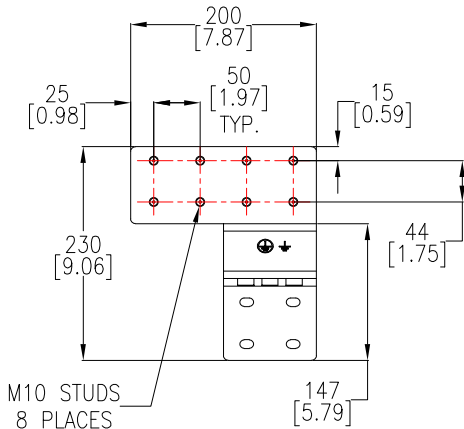


ISOMETRIC VIEW

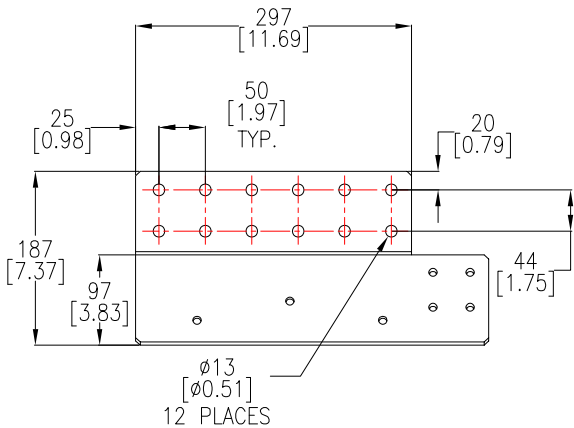
INPUT/BYPASS BUSBAR  
(L1, L2, L3)  
THICKNESS: 10mm [0.39 Inch]



PE/GROUNDING BUSBAR  
THICKNESS: 8mm [0.31 Inch]



NEUTRAL BUSBAR  
THICKNESS: 10mm [0.39 Inch]



- NOTES:
1. INSTALLATION SHALL COMPLY WITH ALL APPLICABLE NATIONAL, STATE AND LOCAL ELECTRICAL REGULATIONS.
  2. REFER TO PRODUCT DOCUMENTATION FOR ADDITIONAL DETAILS PRIOR TO INSTALLATION AND SITE PREPARATION WORK.
  3. ALL DIMENSIONS ARE IN MILLIMETERS [INCHES].
  4. FOLLOW THE INSTRUCTIONS AS PER INSTALLATION MANUAL FOR INTERCONNECTION BUSBAR ASSEMBLY.

THIS DRAWING AND SPECIFICATIONS HEREIN ARE THE PROPERTY OF SCHNEIDER ELECTRIC AND SHALL NOT BE COPIED, REPRODUCED OR USED IN WHOLE OR IN PART, AS THE BASIS FOR THE MANUFACTURE OR SALE OF ITEMS WITHOUT WRITTEN PERMISSION FROM SCHNEIDER ELECTRIC. THIS DRAWING IS BASED UPON LATEST AVAILABLE INFORMATION AND IS SUBJECT TO CHANGE WITHOUT NOTICE.



TITLE: Galaxy VXL  
Backfeed Protection Cabinet  
380/400/415V, 3PH, 50/60Hz, Single/Dual Mains  
BUSBAR VIEWS

DWG NO: GVXLOPT001

REV: 0

DRAWN: TRASSIA 03-DEC-25

FIRST

ENGINEER: ChenLei BAO 17-DEC-25

ANGLE

PROJECT: SUBMITTAL DRAWINGS SHEET 4 OF 4

APPROVED: Jerry LIU 17-DEC-25

PROJECTION